

# LAN Workstation Installation Process

This section describes the installation of the electronic directory to LAN workstation.

## Workstation Minimum Requirements:

This option installs directory data on your server. The user runs the viewer install program from the server which runs from their computer.

Server Platforms: WIN 2000, XP, 2003, or 2008

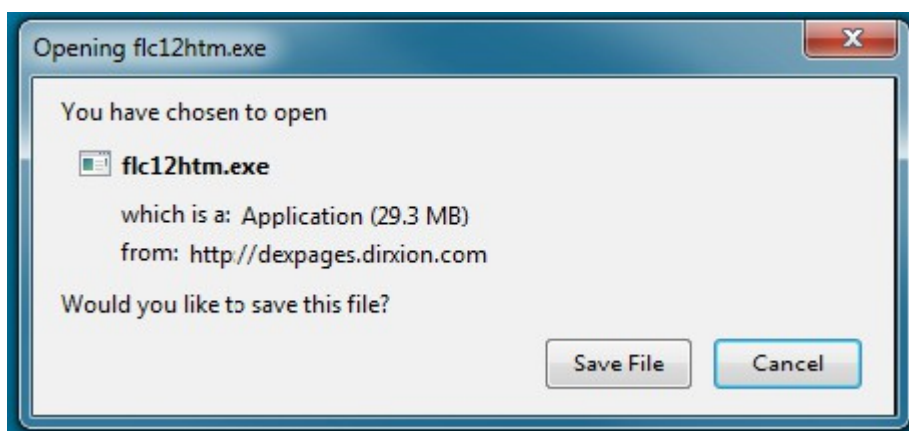
User Platforms: WIN 2000, XP, Vista, Windows 7 or later.

## Installing Electronic Directories on Windows Operating Systems

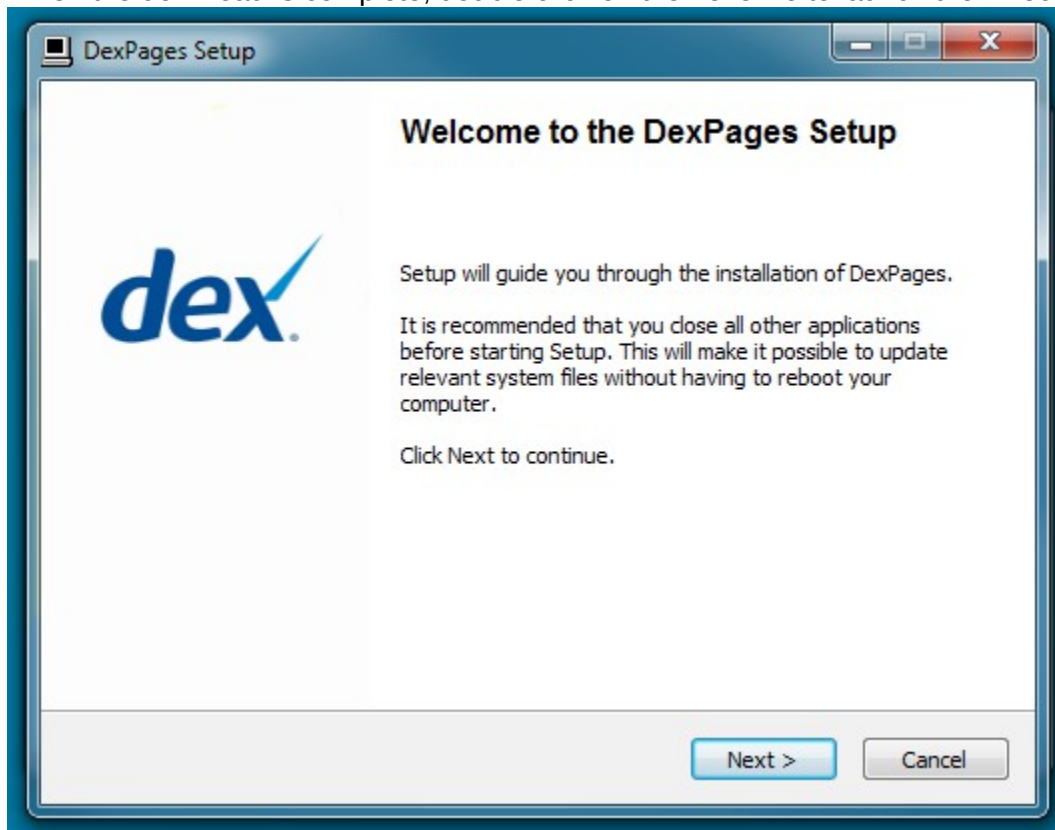
1. On The Directory Map, select a state. From the directory list, click on the telephone directory you would like to install on your workstation.
2. Click **Download PC Directory** to download and install the directory on your PC.



3. You will be asked if you would like to save the file. Click **Save File** to proceed, or Cancel to abort the download.



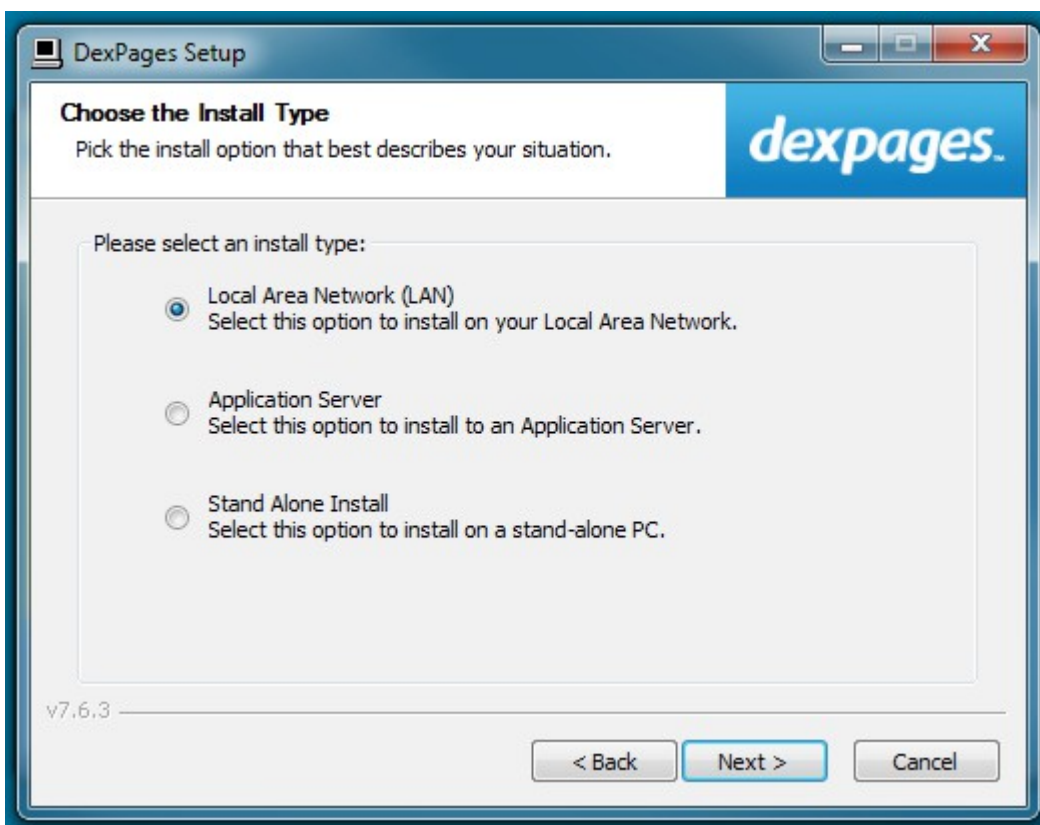
4. When the download is complete, double click on the .exe file to launch the Directory Loader. Click **Next** to proceed.



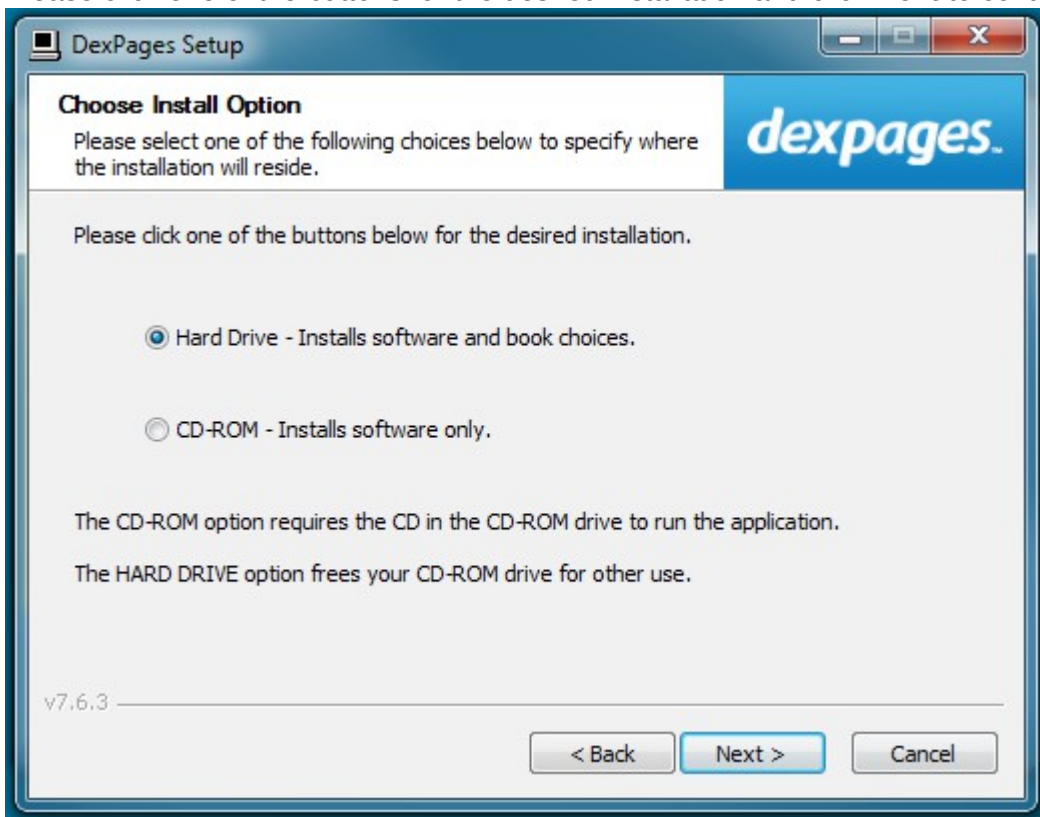
5. Click **I Agree** to the License Agreement to continue.



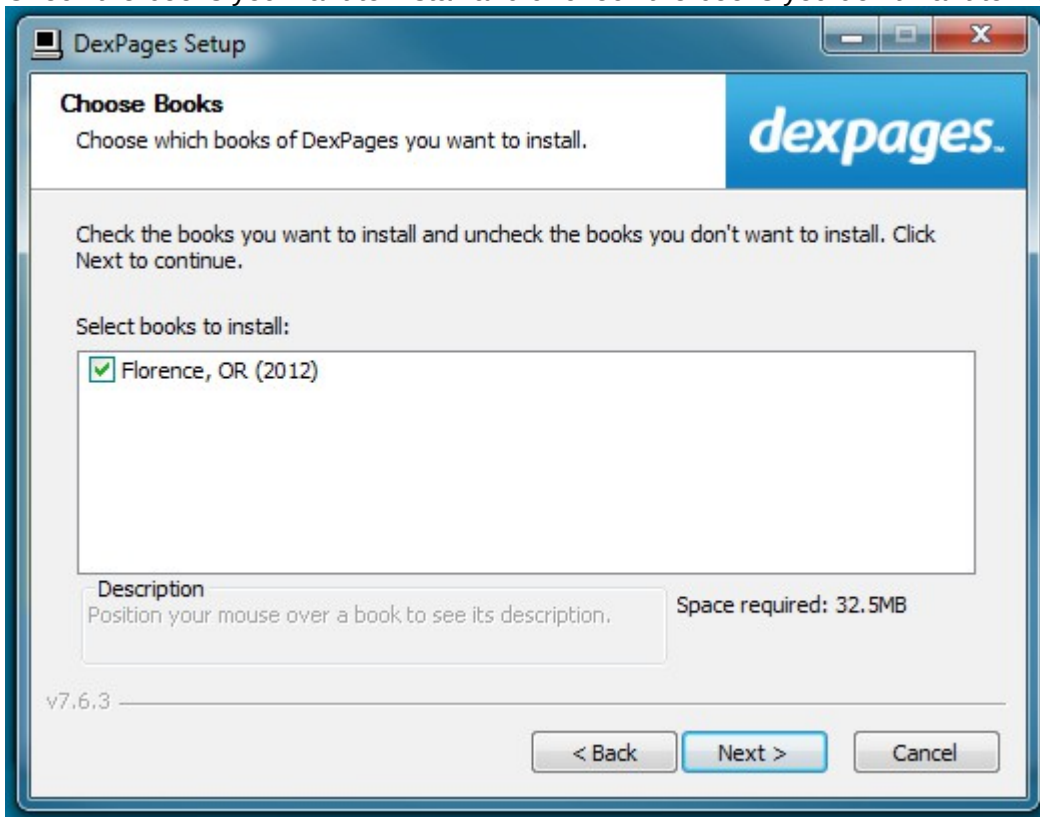
6. Choose **Local Area Network(LAN)** and click **Next** to continue.



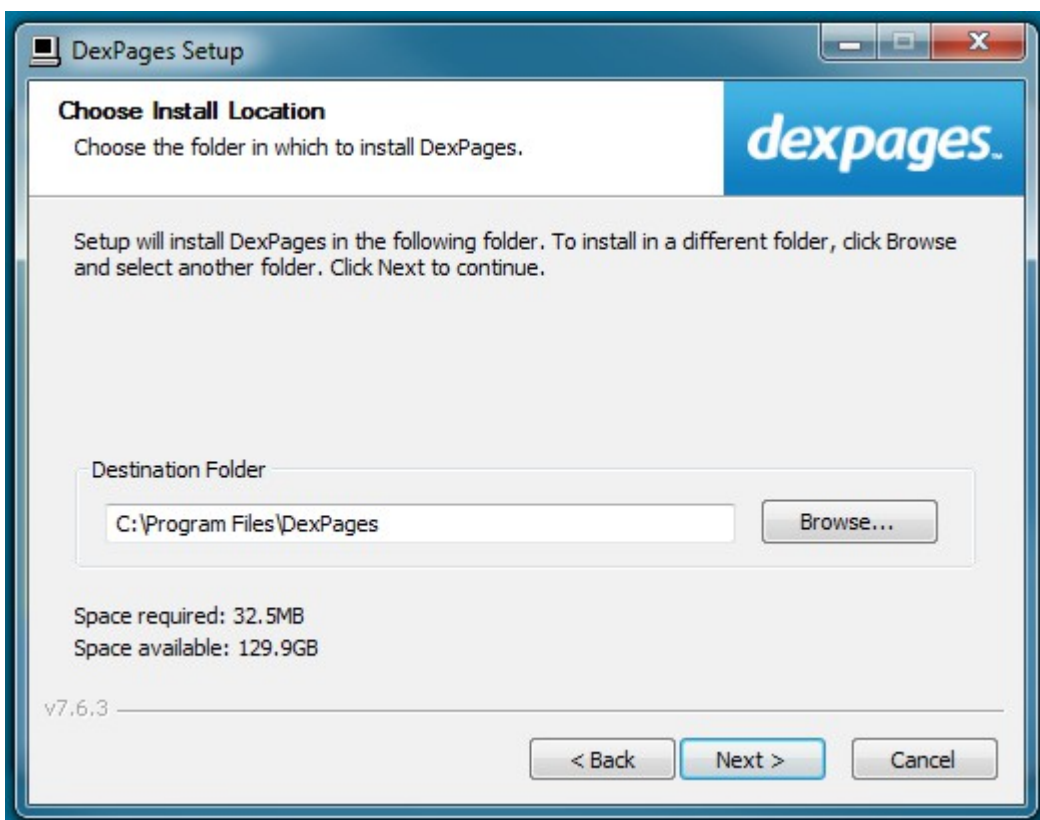
7. Please click one of the buttons for the desired installation and click **Next** to continue.



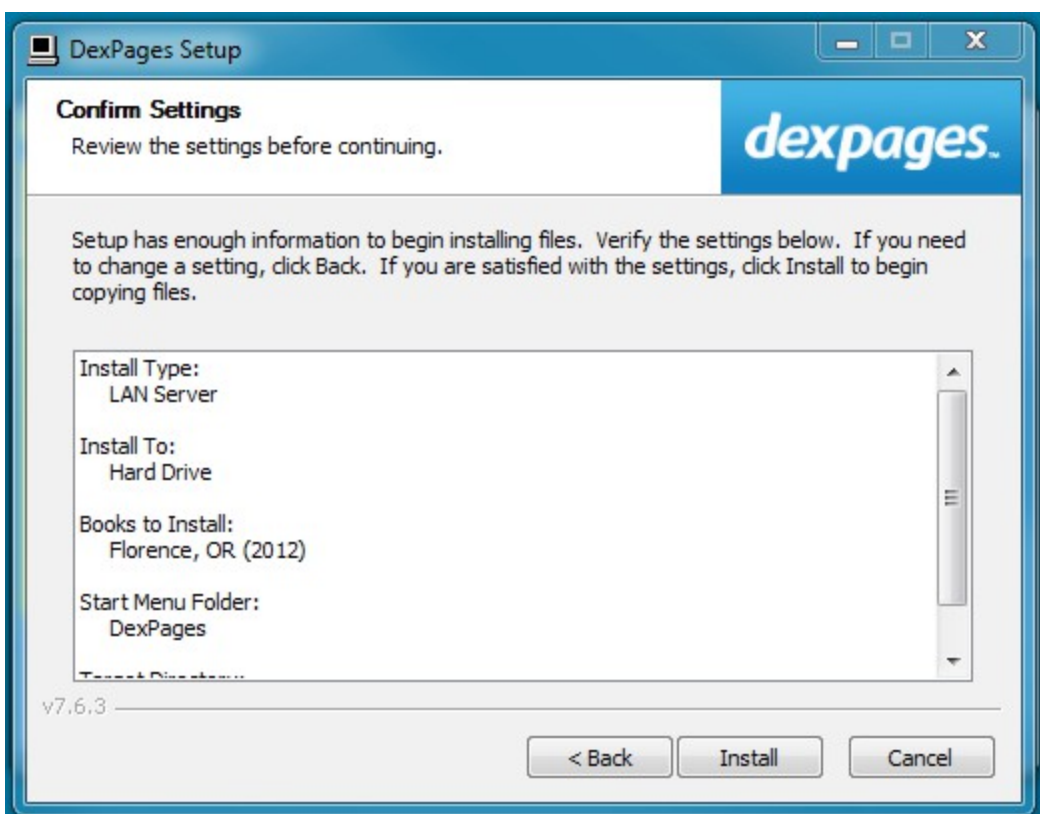
8. Check the books you want to install and uncheck the books you don't want to install. Click **Next** to continue.



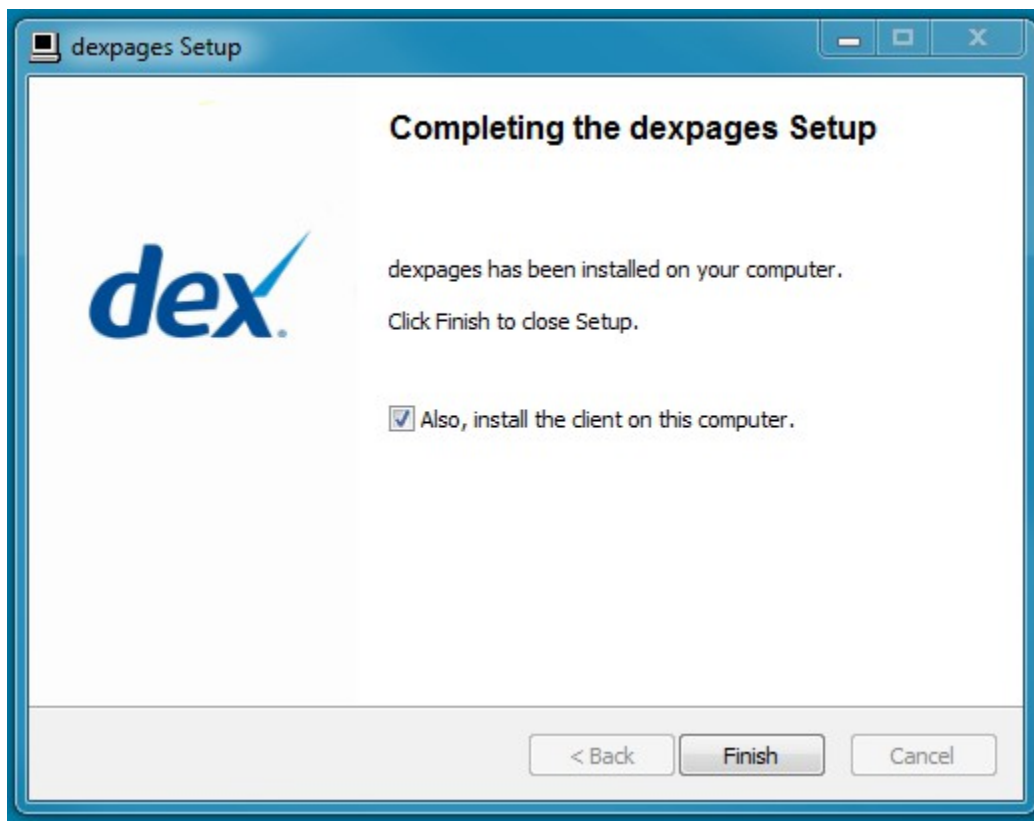
9. Setup will install DexPages in the following folder. To install in a different folder, click Browse and select another folder. Click **Next** to continue.



10. Verify the settings. If you need to change a setting, click **Back**. If you are satisfied with the setting, click **Install** to begin copying files.

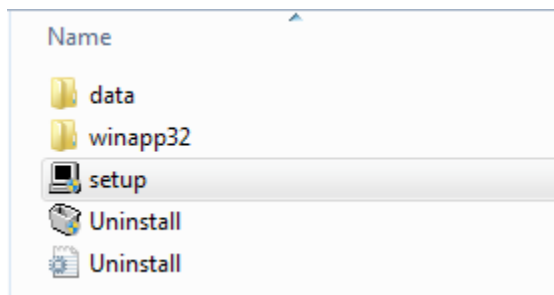


11. Click **Finish**.

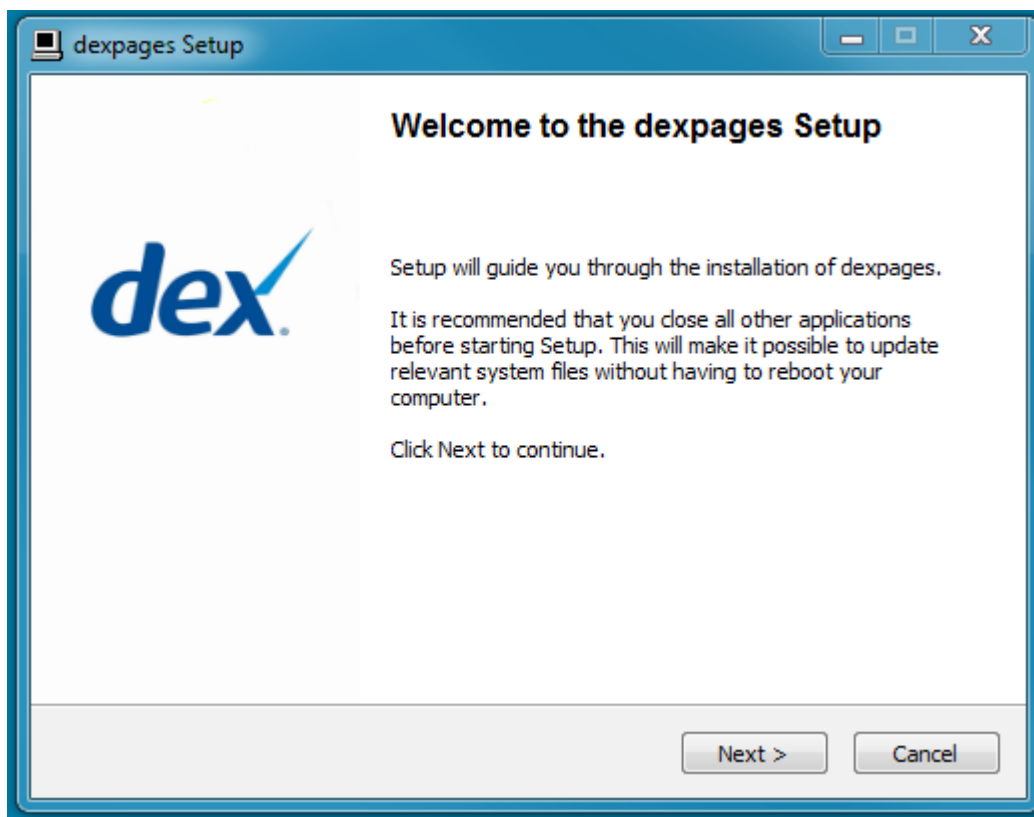


12. Browse the network and locate the network folder where the digital directory is stored.

13. Double-click the **setup.exe** file.



14. Follow the instructions in the install wizard. When the installation is complete, an icon for the digital directory will appear on the workstation's desktop.



15. Users can now double-click the shortcut on their desktop to launch the workstation viewer application and access the digital directory.

